

MONTHLY MEMBERSHIP PROGRESS REPORT

LOCATION ALABAMA

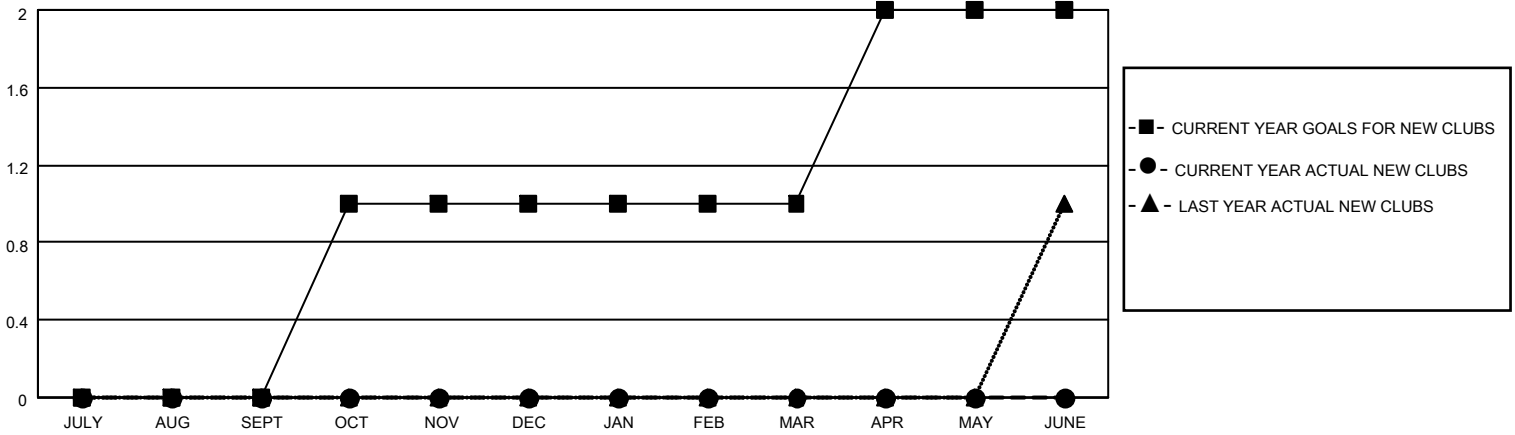
District 34 B

Results as of: 1/31/2022

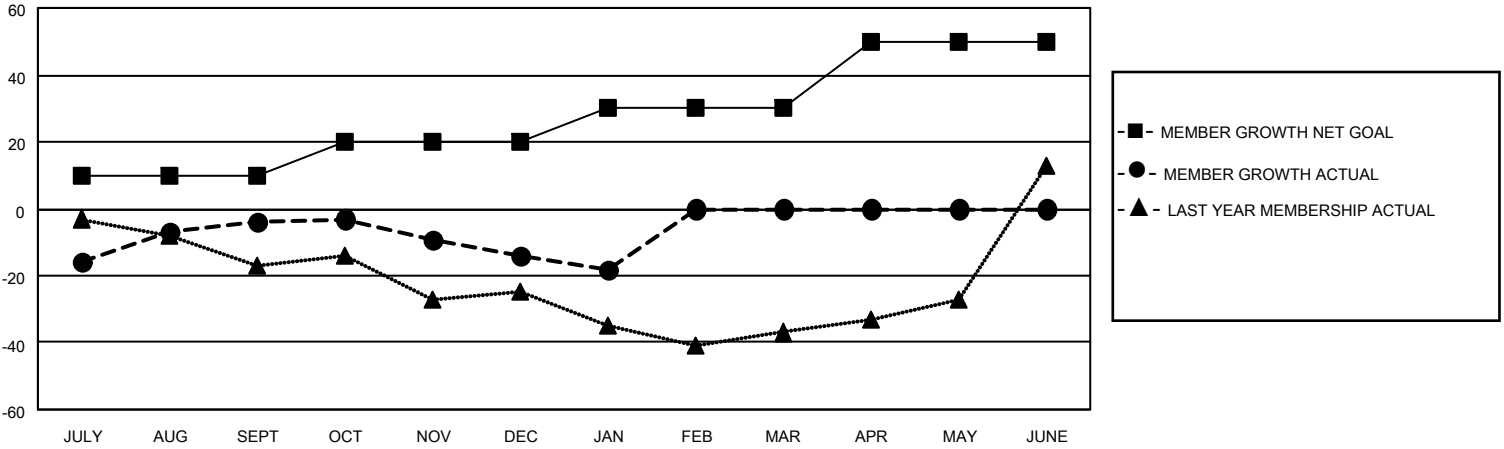
Clubs			
RESULTS FOR 2021-2022			
QUARTER	NEW CLUB GOAL	NEW CLUBS	DROPPED CLUBS
JULY/AUG/SEPT	0	0	0
OCT/NOV/DEC	1	0	0
JAN/FEB/MAR	0	0	0
APR/MAY/JUNE	1	0	0

Members			
RESULTS FOR 2021-2022			
QUARTER	MEMBER GROWTH NET GOAL	MEMBER GROWTH ACTUAL	DROPPED MEMBERS ACTUAL (including transfers)
JULY/AUG/SEPT	10	28	30
OCT/NOV/DEC	10	18	26
JAN/FEB/MAR	10	19	23
APR/MAY/JUNE	20	0	0

GOALS AND ACTUAL NEW CLUBS CUMULATIVE



GOALS AND ACTUAL MEMBERS CUMULATIVE



DROPPED CLUBS: 0

18 CLUBS OF 37 ADDED 1 OR MORE NEW MEMBERS

GENDER DISTRIBUTION

MALE	551 (71.47%)
FEMALE	220 (28.53%)
NON BINARY	0 (0.00%)
PREFER NOT TO ANSWER	0 (0.00%)

DROPPED MEMBERS

DECEASED	4
CLUB CANCELLED	0
OTHER	75
TOTAL	79

[CLICK HERE FOR CUMULATIVE MEMBERSHIP DATA](#)

TOTAL FAMILY UNIT MEMBERS	107
FAMILY MEMBERS PAYING HALF DUES	55